

IN EVERY ISSUE!
Our **BEST TIPS** for
beautiful gardens

**8 GARDEN-TESTED
PERENNIALS**
for sun and shade | 8

When You Should
(AND SHOULDN'T) tackle
any garden task | 28

Garden Gate

www.GardenGateMagazine.com | February 2014 • Issue 115

the Best **NEW
PLANTS**

for **SUN and SHADE**

(Our) 19 Must-Haves for 2014)
see page 14

**10 SMART
DESIGN
IDEAS** from
Garden Gate
readers see page 30

**MORE FLOWERS
FOR LESS MONEY**
here's how! | 42

Transform a small
backyard into
**THE ULTIMATE
GETAWAY** | 12

COLORFUL COMBOS
for a **FABULOUS
SPRING BORDER** | 26

**7 EASY-CARE PLANTS
+ 1 SIMPLE DESIGN**
= **Gorgeous island
anywhere** | 40

Meet 'Rose and Shine'
petunia on page 15



ON THE COVER: We tried lots of new plants in our test garden last year. One of our favorites was the unusual deep red-and-cream striped 'Rose and Shine' petunia. Photo: Jack Coyier

ON THE BACK COVER: Some flowers, such as this hydrangea, are beautiful in every season. Photo: Jack Coyier

4 | READER TIPS

5 | FROM THE WILD SIDE

7 | EASY WEEKEND GARDENING Get that garden shed organized!

8 | SHARED WISDOM 8 perennial picks from a pro

12 | BEFORE & AFTER Jazz up your outdoor living space

14 | GARDEN GATE'S TOP PICKS: The best new plants for 2014



FEATURES

22 | 5 Problem-Solving Shrub Roses

These modern shrub roses don't just have gorgeous blooms — they'll work great in trouble spots, too.

26 | Spring Inspiration

Whether you have sun or shade, we have a beautiful spring combination for your garden.

28 | Day Planner

Is it always the right time to work in your yard? Think ahead about what chores to do when.

30 | 10 Smart Design Tips

We asked, and you answered! Check out our favorite reader-tested tips and ideas to solve all your design problems.

34 | Creating a Natural Wonder

How do you maintain a garden so it's comfortable and good-looking? Find tips that will help you create a charming oasis.

40 | DESIGN CHALLENGE Island beds are more than just pretty — they're useful!

42 | TIPS FROM THE TEST GARDEN Make direct sowing seeds a success

44 | MASTER TECHNIQUE Speed up germination for slow seeds

45 | CONTAINER RECIPE Instant spring!

46 | ASK GARDEN GATE

47 | WEED WATCH

48 | GARDEN ESSENTIALS

50 | EDITOR'S CHOICE: 'Gryphon' begonia looks great from spring until frost

52 | FINISHING TOUCHES



Free tips every week!

Garden Gate eNotes

Garden tips and techniques delivered to you by email each week!

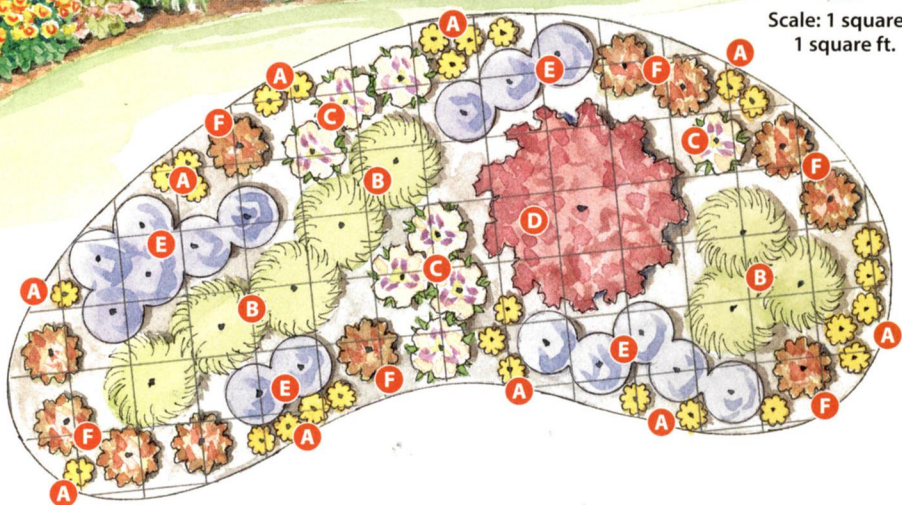
Sign up today:

www.GardenGateMagazine.com

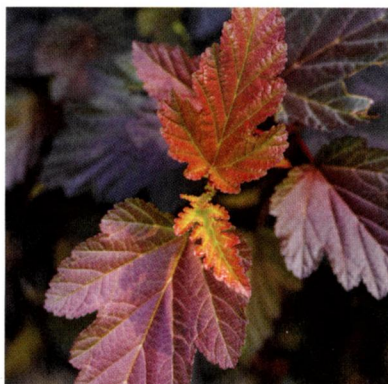
BUILD A BERM Add extra soil to raise the plants a foot or two. Planting on a slight slope shows them better.



Scale: 1 square = 1 square ft.



DON'T BLOCK THE VIEW Wispy grasses in the middle of the bed soften the view but won't block it completely.



D Ninebark
Physocarpus opulifolius Coppertina™
 Shrub; pale pink flowers in early summer; full sun; 6 to 8 ft. tall and wide; cold-hardy in USDA zones 3 to 8, heat-tolerant in AHS zones 8 to 1
 Number to plant: 1



E Bellflower
Campanula 'Viking'
 Perennial; deep lavender flowers from late spring to midsummer; full sun; 15 to 18 in. tall, 18 to 24 in. wide; cold-hardy in USDA zones 5 to 8, heat-tolerant in AHS zones 8 to 1
 Number to plant: 16



F Heucherella
Heucherella 'Sweet Tea'
 Perennial; white flowers in early summer; full sun to part shade; in flower can grow 18 to 20 in. tall, 24 to 28 in. wide; cold-hardy in USDA zones 4 to 9, heat-tolerant in AHS zones 9 to 1
 Number to plant: 11

PHOTOS: Courtesy of All-America Selections (A); courtesy of www.PerennialResource.com (B, C); courtesy of Visions Photography (E)