



American Nurseryman

Covering commercial horticulture since 1904

December 2009

**NEW
PLANTS**
for
2010

**Extended online
version!**
Check inside
for details.

Departments

Editor's Desk	6
Plant Health	8
What's Growing On	10
Calendar	50
Field Notes	62
New Products	64
Field Notes	66

In every issue

AdScape	49
Subscription/Reader Service Form	51
AdMart	52
Plants & Supplies	53
Opportunity Exchange	60
Advertisers Index	61

Special advertising section

Product & Literature Showcase 48

On the cover:

The slow-growing dwarf variegated barberry *Berberis thunbergii* 'Goruzam' (Golden Ruby™) features leaves that mature to a burgundy-maroon with a gold ring around the outer leaf in summer, while fall color is flame orange to brick red. Golden Ruby reaches 15 inches tall by 24 inches wide.

Photo courtesy of
Lake County New Plants LLC



December 2009

American Nurseryman

Issue 12 Volume 209

www.amerinnursery.com



14



42



36



28

New Plants for 2010 12

Take a sneak peek of some of the perennials, trees, shrubs, groundcovers and roses that will hit the market next year.

Digital Edition

Visit page 46 to see how to access your digital edition and see even more new plant introductions for 2010.





NEW PLANTS *for* 2010

Take a sneak peek of some of the perennials, trees, shrubs, groundcovers and roses that will hit the market next year.



The anticipation of a new year brings with it the excitement of new plants hitting the US wholesale and retail markets. AMERICAN NURSERYMAN is giving you a preview of 82 plants to keep an eye out for in 2010.

The AMERICAN NURSERYMAN New Plants Issue for 2010 features an exciting array of perennials, trees, shrubs, groundcovers and roses listed in alphabetical order for your convenience. Want more? For the first time, AMERICAN NURSERYMAN is featuring other outstanding introductions in the online edition of our December issue. See page 46 for instructions on how to access your electronic edition.

All entries include essential growing information, such as cold hardiness, cultural requirements, propagation methods, habit and growth rates. We also provide exclusive information about the plant's ornamental characteristics, landscape uses and applicable patents or royalties.

Material concerning each plant has been provided by the source. Every effort has been made to ensure the accuracy of this information; however, we cannot guarantee plant status, availability or quantity.

Let us know what you think of the new plants for 2010 on our Facebook page at www.facebook.com/pages/American-Nurseryman-Magazine/75226911438.

For suppliers of the plants mentioned in this article, see Re:Sources online in January 2010.





Achillea 'Peachy Seduction'



Ajuga 'Pink Lightning'



Alstroemeria 'Tangerine Tango'

Propagation methods: Grafting; easier to propagate than *A. shirasawanum* 'Aureum'

Pest/disease information: Very little leaf scorch when grown in full sun

Patent/royalties: US Plant Patent No. 16,718; \$1

Availability/distribution: Liners; B&B; No. 15 container

For more information: Carl Munn, Munn's Nursery Inc., 9445 72nd Ave., Brooks, OR 97305; (503) 792-4187; fax (503) 792-4188

Achillea 'Peachy Seduction'

Common name: 'Peachy Seduction' yarrow

Introduced by: Blooms of Bressingham, Sacramento, CA

Hardiness: Zones 4 to 8; AHS heat zones 1 to 9

Origin: Tried and selected in the US by Blooms of Bressingham from Dutch breeding (Taki & Co. Ltd.)

Ornamental features: This Seduction Series yarrow features large clusters of glowing peach-pink flowers most of summer (June through August); rich green, ferny foliage

Habit and growth rate: Columnar and upright; 19 inches tall by 20 inches wide in the first year

Culture: Full sun; adaptable to nearly any soil type with adequate drainage; allow to dry between waterings

Landscape value: Perennial borders; large containers

Propagation methods: Propagation prohibited without license

Pest/disease information: Excellent disease resistance, unlike older rot-susceptible varieties; aphids are common pests

Patent/royalties: Royalties included in price

Availability/distribution: Liners available July 1, 2010

For more information: Blooms of Bressingham, PO Box 660872, Sacramento, CA 95866-0872; (800) 232-9557, ext. 2512; www.bobna.com

Ajuga 'Pink Lightning'

Common name: 'Pink Lightning' bugleweed

Introduced by: Sunny Border Nurseries Inc., Kensington, CT

Hardiness: Zones 4 to 8

Origin: Found as a sport of *A. 'Purple Torch'* by Sunny Border Nurseries

Ornamental features: Green leaves with distinct, white variegation; pink flower spikes

Habit and growth rate: Spreading; 10 to 12 inches tall by 12 to 15 inches wide

Culture: Full sun to full shade; good garden soil

Landscape value: Groundcover

Propagation methods: Cuttings; propagation prohibited without license

Pest/disease information: Deer-resistant

Patent/royalties: PPAF

Availability/distribution: Containers
For more information: Marc Laviana, Sunny Border Nurseries Inc., 1709 Kensington Road, PO Box 483, Kensington, CT 06037; (800) 732-1627; fax (860) 828-9318; e-mail sales@sunnyborder.com; www.sunnyborder.com

Ajuga 'Sparkler'

Common name: 'Sparkler' variegated Japanese ajuga

Introduced by: Terra Nova Nurseries Inc., Canby, OR

Hardiness: Zones 6 to 9

Origin: Terra Nova Nurseries

Ornamental features: Thick, dark green, shiny foliage covered in creamy white splashes; hybrid vigor with blue flowers in spring

Habit and growth rate: Groundcover; 3 inches tall by 10 to 24 inches wide

Culture: Sun to part shade; prefers moist, humus-rich, well-drained soil; average water

Landscape value: Groundcover; containers; edging a garden bed



Ajuga 'Sparkler'

Propagation methods: Division; cuttings

Pest/disease information: None

Patent/royalties: PPAF

Availability/distribution: Liners

For more information: Terra Nova Nurseries Inc., 10051 South Macksburg Road, Canby, OR 97013; (800) 215-9450; www.terravanurseries.com

Alstroemeria 'Tangerine Tango'

Common name: 'Tangerine Tango' Inca lily

Introduced by: North Creek Nurseries Inc., Landenberg, PA

Hardiness: Zones 6(5) to 9

Origin: Discovered by Dr. Mark Bridgen, professor of horticulture at Cornell University, Ithaca, NY, and director of the Long Island Horticultural Research & Extension Center, Riverhead, NY

Ornamental features: Array of showy, tangerine-colored flowers with hints of lemon yellow and lime green, accented by dark brown speckling along inner petals; stems average 15 florets per umbel; flowers May until first frost

Habit and growth rate: Clumping with sturdy, upright stems; 30 inches tall by 12 to 18 inches wide

Culture: Full sun; well-drained, humus-rich soil; protect with a layer of mulch in cooler regions as uniform soil temperature extends bloom period

Landscape value: Middle of perennial border en masse; long-lasting cut flower; specimen; containers

Propagation methods: Tissue culture

Pest/disease information: None

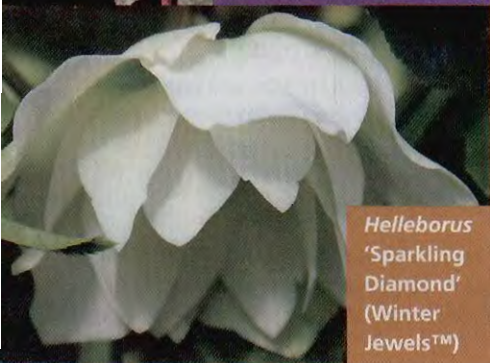
Patent/royalties: PPAF; 25 cents

Availability/distribution: Plug liners; trays of 50

For more information: Kevin Stasa, North Creek Nurseries Inc., 388 North Creek Road, Landenberg, PA 19350; (877) 326-7584 or (610) 255-0100; fax (610) 255-4762; e-mail kevin@northcreeknurseries.com; www.northcreeknurseries.com



Helleborus × *ballardiae*
'HGC Pink Frost'



Helleborus
'Sparkling Diamond'
(Winter Jewels™)

silvery sheen marbled across the top, accented by red stems and veins

Habit and growth rate: Compact and mounding; 12 to 15 inches tall by 24 inches wide

Culture: Part to full shade; moist, well-drained soil; benefits from summer mulching

Landscape value: Shady borders; containers

Propagation methods: Tissue culture

Pest/disease information: Disease-resistant foliage; deer-resistant

Patent/royalties: PPAF

Availability/distribution: Liners; gallon container

For more information: Debbie Hewlett, Skagit Gardens, 3100 Old Highway 99 South, Mount Vernon, WA 98273; (800) 334-1719; fax (800) 874-1456; www.skagitgardens.com

Helleborus 'Sparkling Diamond'

Common name: Winter Jewels™ hellebore

Introduced by: Terra Nova Nurseries Inc., Canby, OR

Hardiness: Zones 5 to 8

Origin: Terra Nova Nurseries

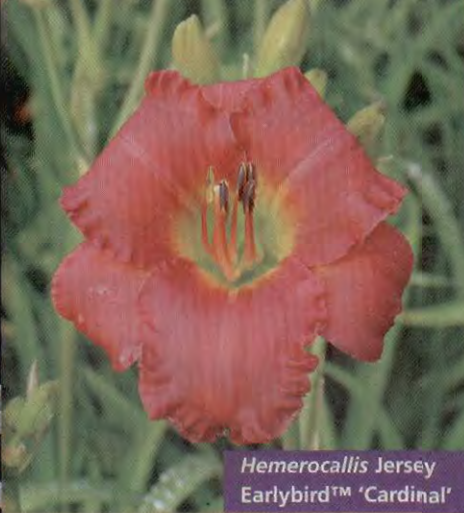
Ornamental features: Profusion of double, pure-white blooms

Habit and growth rate: Clumping; 12 inches tall by 24 inches wide

Culture: Dappled shade; needs good drainage in fertile, humus-rich soil; dry slightly between waterings

Landscape value: Winter alternative to traditional poinsettias; mixed beds; cottage gardens; understory

Propagation methods: Seed strain



Hemerocallis Jersey
Earlybird™ 'Cardinal'

Pest/disease information: None

Patent/royalties: None

Availability/distribution: Liners

For more information: Terra Nova Nurseries Inc., South Macksburg Road, Canby, OR 97013; (800) 215-9450; www.terravanurseries.com

Hemerocallis

Jersey Earlybird™ 'Cardinal'

Common name: Jersey Earlybird™

'Cardinal' daylily

Introduced by: Centerton Nursery Inc., Bridgeton, NJ

Hardiness: Zones 5 to 9

Origin: Bred by Dr. Darrel Apps

Ornamental features: Early season color with extended bloom times; blooms in May within a week of *H. 'Stella de Oro'* and reblooms for nearly 100 days through Zone 6 and 85 days in Zone 5; ruffled-edge, fire engine-red blooms with yellow to green throat; thick, ever-green foliage

Habit and growth rate: Clumping; 21 inches tall by 24 inches wide

Culture: Full sun; well-drained, composted soil; evenly moist

Landscape value: Beds; borders; specimen; containers

Propagation methods: Vegetative division; propagation prohibited without license

Pest/disease information: Rust-, pest- and drought-resistant

Patent/royalties: US Plant Patent No. 16,515

Availability/distribution: 1-gallon container

For more information: Robert Blew, Centerton Nursery Inc., 345 Woodruff Road, Bridgeton, NJ 08302; (800) 533-1132; fax (856) 451-2813 or (856) 453-1685; e-mail bobby@centertonnursery.com; www.earlybirddaylily.com

Hemerocallis 'Petit 0602'

Common name: Kokomo Sunset™

Enjoy 24/7® daylily

Introduced by: Greenleaf Nursery Co., Park Hill, OK

Hardiness: Zone 5

Origin: Hybridized by Dr. Ted Petit, McIntosh, FL

Ornamental features: Heavily textured flowers are gold with a red eye on branched scapes that begin blooming eight weeks earlier than standard daylilies; compact, narrow, dark green foliage

Habit and growth rate: Upright and spreading; 18 to 24 inches tall by 2 feet wide

Culture: Full sun; normal soil with drainage; minimal watering

Landscape value: Borders; specimen

Propagation methods: Division

Pest/disease information: Rust-resistant

Patent/royalties: PPAF; 32 cents

Availability/distribution: 8-inch container

For more information: Jim Thompson, Greenleaf Nursery Co., 28406 Highway 82 South, Park Hill, OK 74451; (918) 457-5172; e-mail jim_thompson@greenleafnursery.com; www.greenleafnursery.com

Hibiscus moscheutos

'Small Wonder'

Common name: 'Small Wonder' hardy hibiscus

Introduced by: Fleming's Flower Fields Inc., Lincoln, NE

Hardiness: Zones 4 to 11; AHS heat zones 4 to 10

Origin: Hybridized in Nebraska by Dave Fleming and Gretchen Zwetzig of Fleming's Flower Fields; tested for 10 years

Ornamental features: This Fleming Dwarf Hibiscus™ has 8- to 9-inch, off-white flowers with red streaks and markings; dark purple "maple" leaves; blooms from top to bottom of plant from spring through fall

Habit and growth rate: Extremely compact; medium to vigorous growth; 2½ feet tall and wide



Hibiscus moscheutos 'Small Wonder'



Hemerocallis 'Petit 0602'
(Kokomo Sunset™ Enjoy 24/7®)